



South Suburban Archaeological Society

ArkyFacts

Monthly Newsletter of the
South Suburban Archaeological Society
Summer Schedule of Events
(no Irwin Center lectures)

2017

June 15 🍷 Pizza & Pasta Party, 7:00–9:00

Flossmoor Station, 1035 Sterling Ave., Flossmoor

June 26 Officers Meeting

Saturday, July 8 🍷 Isle a la Cache Museum
1:00 at the museum located on Romeo Road/135th Street, east of
Route 53 in Romeoville.

(Google map: <https://goo.gl/maps/RLgt7>)

Saturday, August 5

🍷 Aztalan, WI

Deadline for material to be included in the next
Arkyfacts is two weeks before the monthly meeting.

nitel

Corporate sponsorship, making it possible...

ArkyFacts June 2017

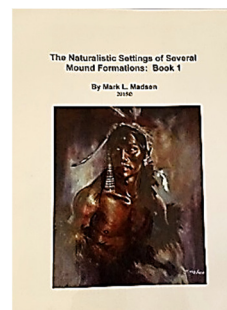


1035 Sterling Ave., Flossmoor

June 15, 2017

We are stirring things up a bit by hosting a more informal get-together that brings members, guests, and friends together for the summer solstice (a week early) evening of pizza and pasta. We hope you can join us at **Flossmoor Station, 1035 Sterling Avenue, Flossmoor** on Thursday, June 15, 2017. The party begins at 7:00 and will cost **\$25** per person. The buffet of pizza and pasta includes pizza, six cheese purse pasta with spinach and roasted red peppers in a garlic parmesan cream sauce, tossed green salad with balsamic vinaigrette, garlic bread basket, and a fresh fruit tray. Drinks are on your own.

In addition to eating and socializing, a book will be raffled. Mark Madsen, who was our March speaker, donated his book, *Naturalistic Settings of Several Mound Formations*. It is a lovely book with a lot of pictures and data.



On **Saturday, July 8**, SSAS members will tour Isle a la Cache Museum in Romeoville. “The Isle a la Cache Museum offers visitors an adventure in 18th century history, when the ‘Illinois Country’ was home to French voyageurs and native Potawatomi. The Museum features interactive exhibits of the Great Lakes fur trade of the 1700s, in addition to a replica Native American longhouse.” We meet at 1:00 at the museum located on Romeo Road/135th Street, east of Route 53 in Romeoville. (Google map: <https://goo.gl/maps/RLgt7>)

<http://www.reconnectwithnature.org/preserves-trails/Isle-a-la-Cache>

Saturday, August 5 will have us visiting Aztalan, WI, northernmost outpost of Mississippian civilization, with Michael Ruggeri. You might recall Ruggeri’s talk about the history and iconography of this site in November 2016. Aztalan was first settled around 900 and flourished during the 10th to 13th centuries.

Business Meeting Notes

The next business meeting will be on Monday, June 26, at 7:30.

Bookmarks!

South Suburban Archaeological Society

<http://southsuburbanarchsociety.weebly.com/>

See also <http://southsuburbanchapter.tumblr.com>

South Suburban Chapter Facebook: <http://www.facebook.com/SouthSuburbanChapter2015>



SSAS programming is made possible through generous contributions from our members of time, effort, and financial support, and through the valued sponsorship of our friends at: NITEL

Citizen Scientists; Space Archaeologists

University of Alabama Archaeologist, Sarah Parcak, has become an expert at using satellite imagery to locate potential archaeological sites. In the process, she developed a method for identifying areas that have been looted. By using this method, and enlisting the general public to help, she hopes to prevent loss of cultural heritage. Global Xplorer is a website that allows people to scroll through images to assist in finding these sites. Take the online training and tutorial to learn what constitutes a possible looting pit versus bushes and trees.



<https://www.globalxplorer.org/>

Expedition Peru is a recent project that ended in April 2017. Volunteers are still needed, however, for spotting looting.

Parcak is the associate professor of Anthropology and director of the Laboratory for Global Observation at the University of Alabama at Birmingham. She was recently featured on a 60 minutes segment that mentioned how citizens can help spot looting using satellite imaging. Read more about her exciting career, innovative approach, and many discoveries: <https://www.uab.edu/cas/anthropology/people/faculty-directory/122-sara-h-parcak>

"We're in a race against time. Over the past two decades, fundamentalist groups have discovered that they can get global attention by destroying ancient sites and criminal organizations have ramped up efforts to find and sell priceless antiquities for profit. When you look at satellite imagery from affected areas, it's clear that thousands of archeological sites haven't been mapped or surveyed yet. If you don't go and find these sites, they'll be gone forever."

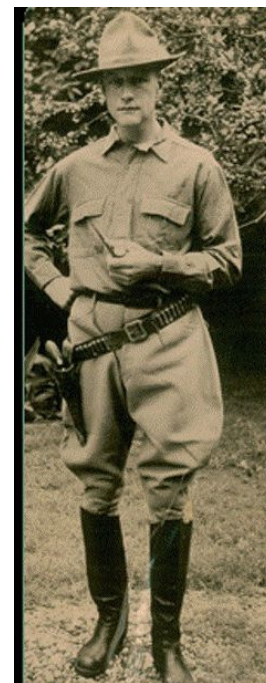
— Dr. Sarah Parcak, National Geographic Fellow and 2016 TED Prize Winner

From our friends at CAS

Chicago Archaeological Society (CAS) is planning a trip to Beloit, Wisconsin on June 24, 2017, to visit the Logan Anthropological Museum and Indian Mounds at Beloit College. Non-members are invited to participate. A modest \$15 donation is suggested. The donation can be applied to the 2018 membership enrollment.

The *safari* title is ***The Ghost of Roy Chapman Andrews***. Bob Stelton, editor of Codex, the newsletter of CAS, writes, "Andrews is arguably Beloit's most illustrious alum. But for me, explorer and adventurer that he was, he was a boyhood hero. Time has blurred his memory in the public's mind, but not in mine."

Safari Itinerary is for a 9:00 am departure from Chicago to Beloit College, 700 College Street. Depending upon the point of departure from Chicago the drive should take approximately 2 hours. Departure from Chicago at 9:00 am would make an 11 am assembly in the Godfrey Anthropology Building for coffee, bagels (supplied by CAS) and briefing feasible. 11:00 am: Beloit briefing conducted by guide Mr. Dan Bartlett. 11:30 am Mounds Exploration. 12:00 pm Museum Tour. 1:30 pm Lunch with our guest and guide, Dan Bartlett. Restaurant TBA. Drawing for MexiMayan door prize. 3:00 pm end of program.



Roy Chapman Andrews

For more information contact Robert Stelton, 630 739-7255, meximayan@meximayan.com